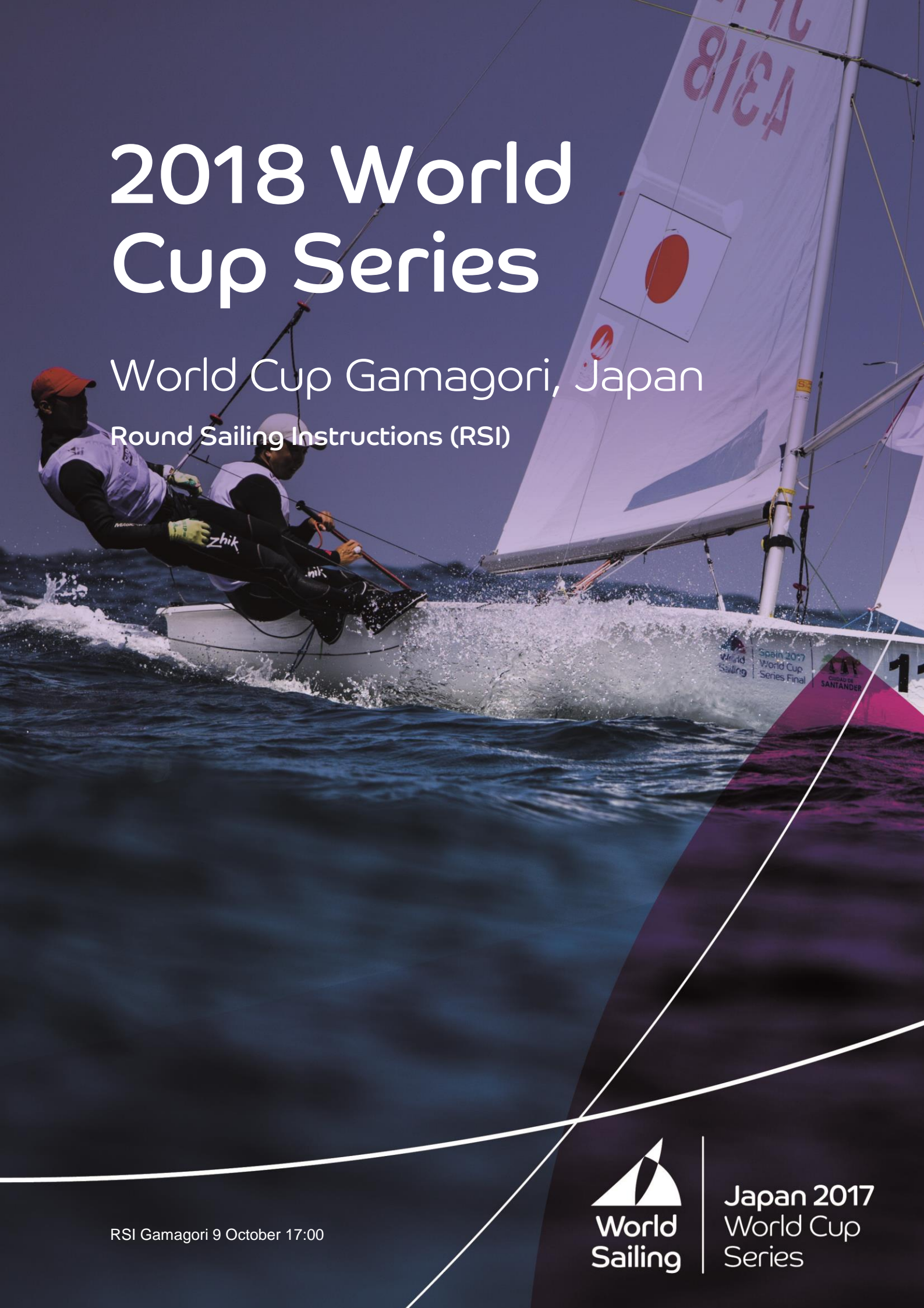


2018 World Cup Series

World Cup Gamagori, Japan

Round Sailing Instructions (RSI)



RSI Gamagori 9 October 17:00



Japan 2017
World Cup
Series

RSI 2 RULES

RSI 2.1 The Addendum Q, Umpire Fleet Racing, is published as separate document on the official notice board and on <http://www.sailing.org/worldcup/onb.php>

RSI 2.2 The Addendum Q has been approved by World Sailing in accordance with rule 86.2 and Regulation 28.1.3. It applies to all medal races and all pre-race or post-race activities related to them.

RSI 9 [DP] IDENTIFICATION AND ADVERTISING

RSI 9.1 Boats or competitors are required to display, carry or wear the following advertising and identification that will be provided by the OA and shall be fixed in accordance with the instructions posted on the Official Notice Board:

- a) Bow numbers;
- b) Event stickers;
- c) Colour dots for the event leaders (1st, 2nd and 3rd)
- d) Bibs for all competitors;
- e) Coloured bibs for event leaders (1st, 2nd and 3rd);
- f) Tracking system; and
- g) Onboard cameras.

10 [DP] [NP] SAFETY REGULATIONS

Emergency Communications:

Communication Channel	Number
Radio VHF	VHF channel according to addendum B
Emergency Services	119
Organizing Authority Phone	+81-70-2225-9353

RSI 11 COMMUNICATIONS WITH COMPETITORS

RSI 11.1 When flag AP is displayed ashore, '1 minute' in RRS Race Signals AP is replaced with the time shown below:

Area	Time
Alpha, Bravo	90min
Charlie, Delta,	60min

RSI 14 SCHEDULE AND COURSE ASSIGNMENTS

RSI 14.1 The opening ceremony will take place on Sunday 15 October at 18:00h. This changes NoR/SI 14.1

RSI 14.2 The first briefing for coaches and sailors will take place on Monday 16 October at 17:00h at Toyota Industries Kaiyoh Yacht Harbor eastern wing building.

There will be a daily morning meeting with team leaders & Coaches, starting on Wednesday 18 October at 08:30 in the same location.

14.3 RSI Addendum 3 - Schedule of Races is published as separate document on the official notice board and on <http://www.sailing.org/worldcup/onb.php>

RSI 15 COURSE AREAS AND MARKS

RSI 15.1 Course Areas are shown in RSI Addendum B.

RSI 15.2 Marks 1, 2, 3, and 4, or associated gate marks, shall be inflatable marks and will be as follows:

Classes	Marks 1, 2, 3, 4	New Mark
RS:X Men and Women	Yellow	Red
49er and 49er FX	Blue	Red
Laser and Laser Radial	Orange	Red
470 Men and Women	Pink	Red

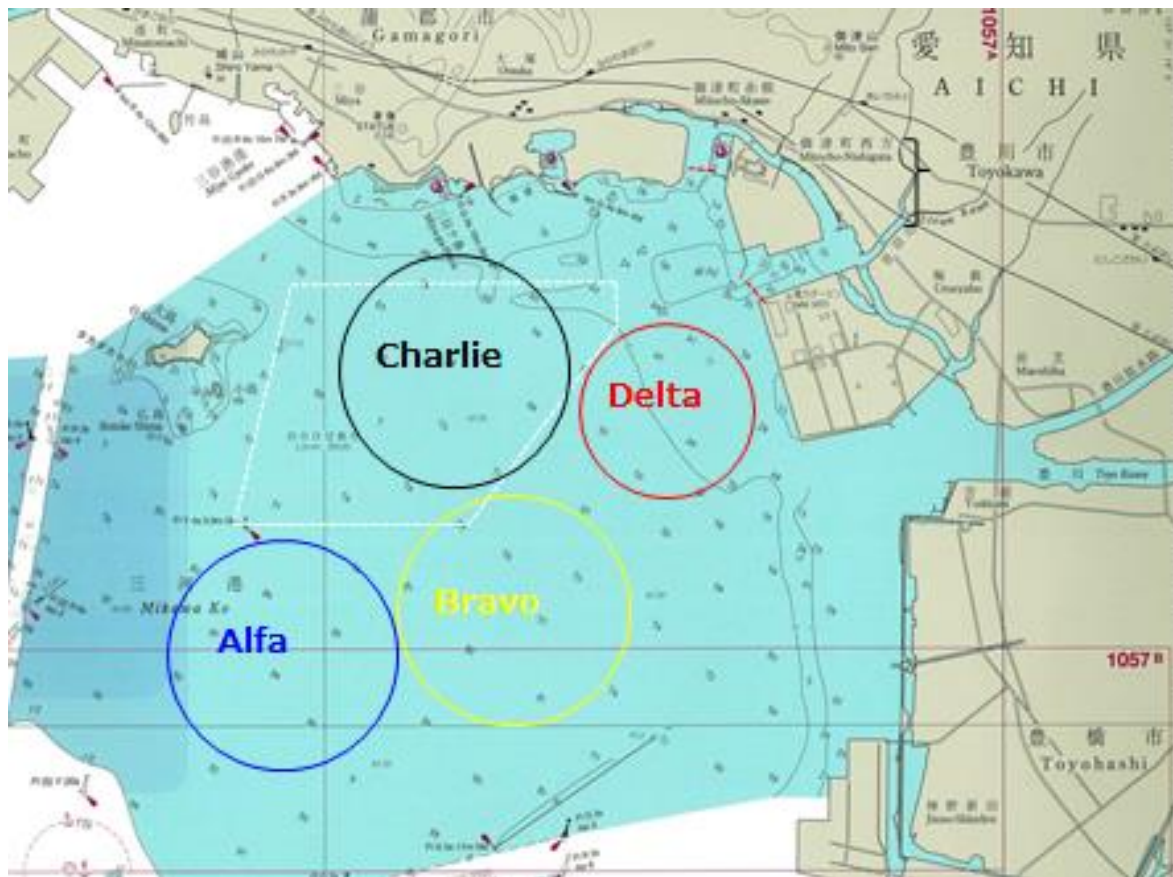
RSI 15.3 Marks S1, S2, and S3 will be Yellow cylindrical buoys

RSI 20 INTERNATIONAL JURY

The protest time limit is either the number of minutes after the last boat has finished the last race of the day or "AP over A" or "N over A" is displayed for an event/fleet as shown below:

	Time
Alpha, Bravo	90min
Charlie, Delta	60min

RSI ADDENDUM B – CHART OF COURSE AREAS

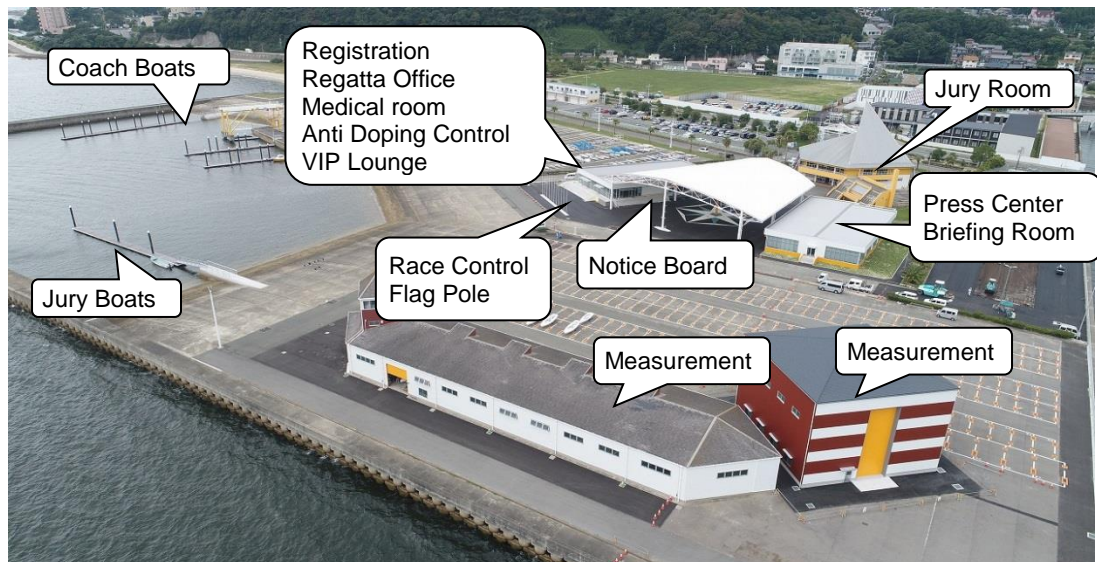


Area	Area Centre	Area Diameter	VHF Channel	Area	Area Centre	Area Diameter	VHF Channel
Alpha	34° 45.500' N 137° 14.800' E	1.4 nm	77	Charlie	34° 47.183' N 137° 16.017' E	1.4 nm	77
Bravo	34° 45.828' N 137° 16.453' E	1.4 nm	77	Delta	34° 46.945' N 137° 17.452' E	1.0 nm	77

ADDENDUM C – VENUE MAP AND BOAT PARKS



Toyota Industries Kaiyoh Yacht Harbor



World Sailing,
20 Eastbourne Terrace
London W2 6LG, UK

Tel: + 44 (0)23 80 635111
Fax: + 44 (0)23 80 635789

sport / nature / technology



Japan 2017
World Cup
Series